



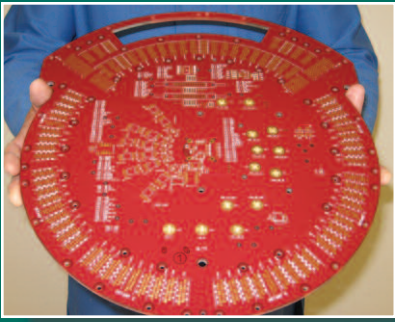
White Mountain Labs

ClearTest ATE Services

Goal: Great new product – right on target. Means: ClearTest ATE Services. Getting to the top requires a world-class support team. We combine advanced project management with test engineering *brilliance* to provide powerful test solutions – on time.

At White Mountain Labs ClearTest ATE Services, our highly experienced engineers and expert systems will develop your ATE solution in record time. We will then fully characterize your product over temperature, voltage and process extremes and publish a comprehensive statistical analysis report highlighting any sensitivities. This proven process will ensure the production manufacturability of your product for years to come.





White Mountain Labs (WML) was founded in 1999 as a highly respected supplier of outsourced ESD and Latch-up Testing to the semiconductor industry. In 2006, the company moved into a 20,000 square foot facility, built from the ground up, with 4,500 square feet of ESD-safe lab space. Over the years, our service portfolio has expanded into Transmission Line Pulse (TLP) testing, ATE test engineering services, as well as several other areas. WML's ClearTest ATE Services offers an experienced test engineering staff along with expert development systems which provide customers with complete test engineering solutions including: test program development, electrical characterization, test limit evaluations and test cost optimization.



Leadership

Expert Project Management

We assign a project manager to handle the schedules, logistics and provide first class communication.

"As users of outsourced test suppliers while working for large semiconductor companies, we have personally been frustrated with poor communications and missed schedules at other test service companies. At White Mountain Labs ClearTest ATE Services, we provide a higher level of service with an experienced Project Manager assigned to every project."

John McCaffrey
VP, New Business Development

Confidence

Highly Experienced Product and Test Engineering Staff

Over 100 years of world-class semiconductor and ATE experience

- Extensive experience in SOC, analog, RF devices
- 75+ products released to production
- Experience across numerous platforms: Teradyne, Verigy, Eagle
- Our team has lived and breathed the new product introduction process (1st silicon to production release) for 20+ years

Capability

ClearTest ATE Services

Standardized test development modules get products into production quickly:

Test Program Development

- An experienced team will develop your full hardware and software test solutions
- Fast release to production with shortest possible time-to-money

Electrical Characterization

- Characterization of your device across temperature, voltage and process variation
- Standardized and streamlined characterization process to make it easy for your engineers
- Advanced software tools take reams of test data and reduces them to an extensive, easy-to-read characterization report that you will refer back to over the life of the product

Test Limit Evaluation

- A significant sample of production test datalogs will be taken over temperature and reduced to a succinct report
- Statistical analysis is performed to analyze test limits and ensure manufacturability

Test Cost Reductions

- A thorough review of your existing production test solution to look for areas of improvement
- Full optimization of your program to reduce test time and save you big dollars in production time

Multi-site Conversions

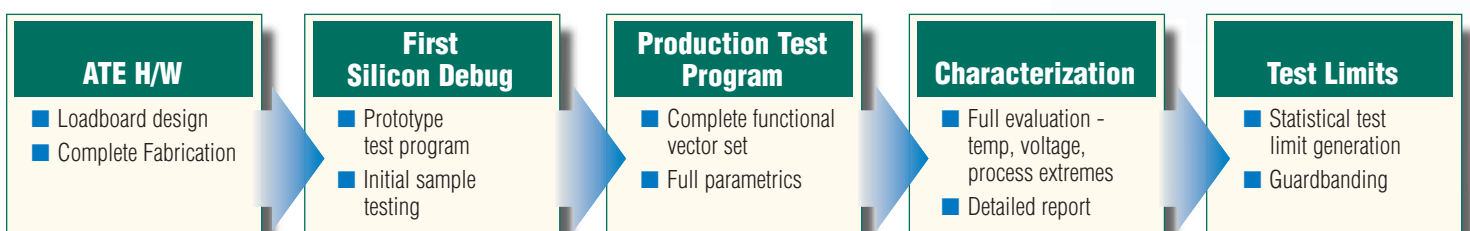
- Single-site test solution converted to low cost multi-site solution
- Take maximum advantage of the high-pin count testers at your production facility with multi-site test

Equipment

- Teradyne J750 EX
- Eagle ETS-364
- Teradyne Flex-RF Config
- Teradyne Flex-PMIC Config
- Teradyne UltraFlex
- Verigy 93000
- Tri-Temp Handler
- Thermostream
- Syntricity DataConductor (Statistical analysis and reporting)

Services Offered

- Test Program Development
- Electrical Characterization
- Test Limit Evaluation
- Test Time Reductions
- Multi-site Conversions
- Sample Testing / Low volume production / Pre-production
- 1st Silicon Debug
- Loadboard Support
- Test Pattern Conversion
- Tester-to-Tester Transfer
- Offshore Transfer






White Mountain Labs
ClearTest ATE Services

10008 S. 51st Street, Suite 110
Phoenix, AZ 85044
Phone: 480.763.0497
Fax: 480.763.1021
www.whitemountainlabs.com